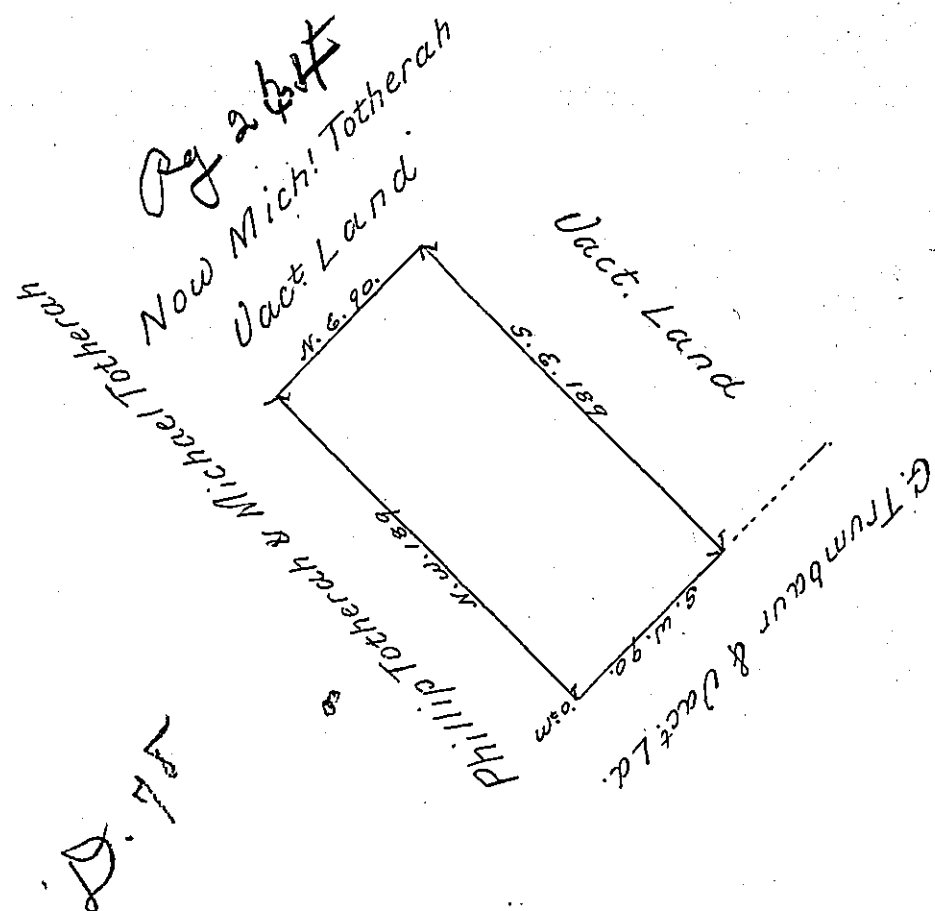


189
90
17010 (1106)



By Virtue of a Warrant from the Proprietaries
 dated the Twenty ninth day of May 1734 Surveyed unto
 George Phillip Totherah a Tract of Land situate in Frederick
 Township in the County of Philad^a Beginning at a large white
 oak a corner of his other Land thence by the same and Land of
 Michael Totherah Northwest one hundred eighty nine perches
 to a post thence by Vacant Land north east ninety perches to a post
 thence by Vacant Land South east one hundred eighty nine perches
 to a post in a line of George Trumbauer Land thence by the same
 and Vacant Land South west ninety perches to the place of
 Beginning containing one hundred acres with the usual all-
 owance of Six plant

Surveyed 9th to 1734

By Nichs. Scull

IN TESTIMONY that the above is a copy of the original remaining on file in
 the Department of Internal Affairs of Pennsylvania, made
 conformably to an Act of Assembly approved the 16th day of
 February, 1833, I have hereunto set my Hand and caused
 the Seal of said Department to be affixed at Harrisburg,
 this third day of December 1901


 Secretary of Internal Affairs.